

Piteå Open 2024



Oil Pattern Distance:	42 Feet	Reverse Brush Drop:	42 Feet	Oil Per Board:	45 uL
Forward Oil Total:	16.47 mL	Reverse Oil Total:	9.225 mL	Volume Oil Total:	25.695 mL
Forward Boards Crossed:	366 Boards	Reverse Boards Crossed:	205 Boards	Total Boards Crossed:	571 Boards

	Start	Stop	Loads	Speed	Crossed	Start	End	Feet	T.Oil
1	2L	2R	2	18	74	0.0	2.5	2.5	3330
2	5L	5R	2	18	62	2.5	7.6	5.1	2790
3	2L	2R	2	18	74	7.6	12.7	5.1	3330
4	9L	9R	2	18	46	12.7	17.8	5.1	2070
5	11L	11R	4	18	76	17.8	28.0	10.2	3420
6	12L	12R	2	22	34	28.0	34.2	6.2	1530
7	2L	2R	0	26	0	34.2	42.0	7.8	0

Forward Reverse More

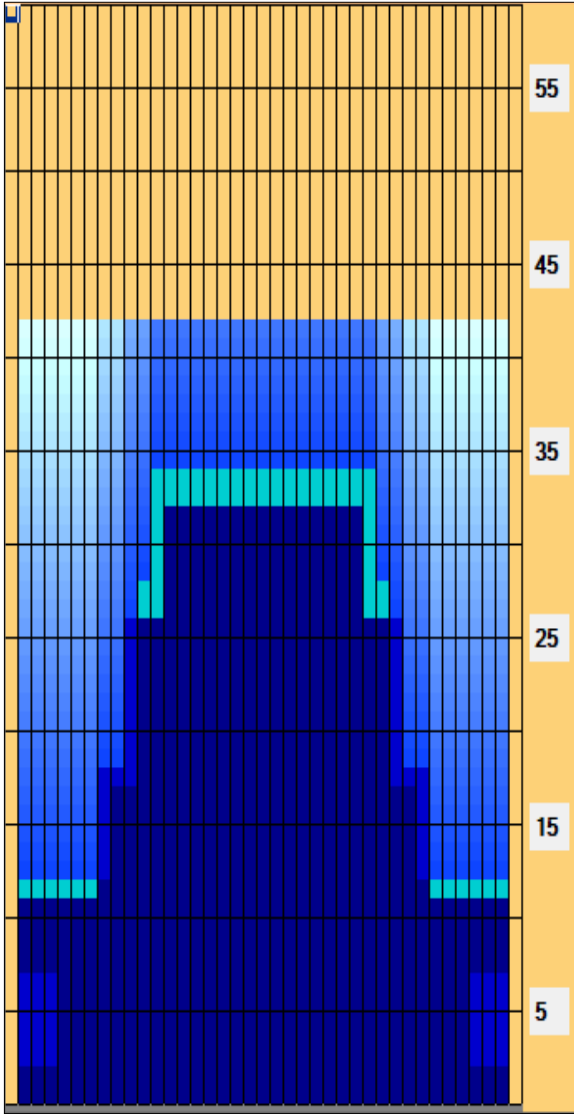
	Start	Stop	Loads	Speed	Crossed	Start	End	Feet	T.Oil
1	2L	2R	0	26	0	42.0	32.0	-10.0	0
2	13L	13R	2	22	30	32.0	25.8	-6.2	1350
3	10L	10R	3	18	63	25.8	18.2	-7.6	2835
4	8L	8R	3	18	75	18.2	10.6	-7.6	3375
5	2L	2R	1	14	37	10.6	8.7	-1.9	1665
6	2L	2R	0	14	0	8.7	0.0	-8.7	0

Forward Reverse More

Conditioner:  
Type In or Select  
One

TransferType:  
Type In or Select  
One

- Forward
- Reverse
- Combined
- Buff



Item	3L-7L:18L-18R	8L-12L:18L-18R	13L-17L:18L-18R	18L-18R:17R-13R	18L-18R:12R-8R	18L-18R:7R-3R
Description	Outside Track:Middle	Middle Track:Middle	Inside Track:Middle	Middle: Inside Track	Middle:Middle Track	Middle:Outside Track
Track Zone Ratio	3.71	1.49	1	1	1.49	3.71

